



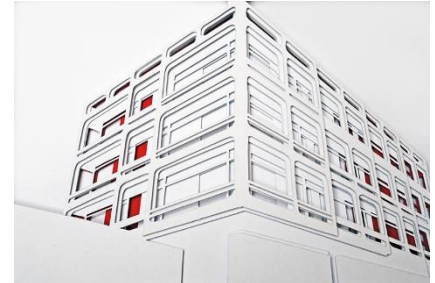
## Somerville College MCR

### Guide to Margery Fry



#### Welcome to Margery Fry!

This building (technically ‘Margery Fry and Elizabeth Nuffield House’) is the focal point of graduate social life in College, alongside the Dining Hall and the college bar. It is reserved for graduates, some of whom will be living in the building, and houses a number of rooms where students can meet up, relax, work, cook, socialise, etc.



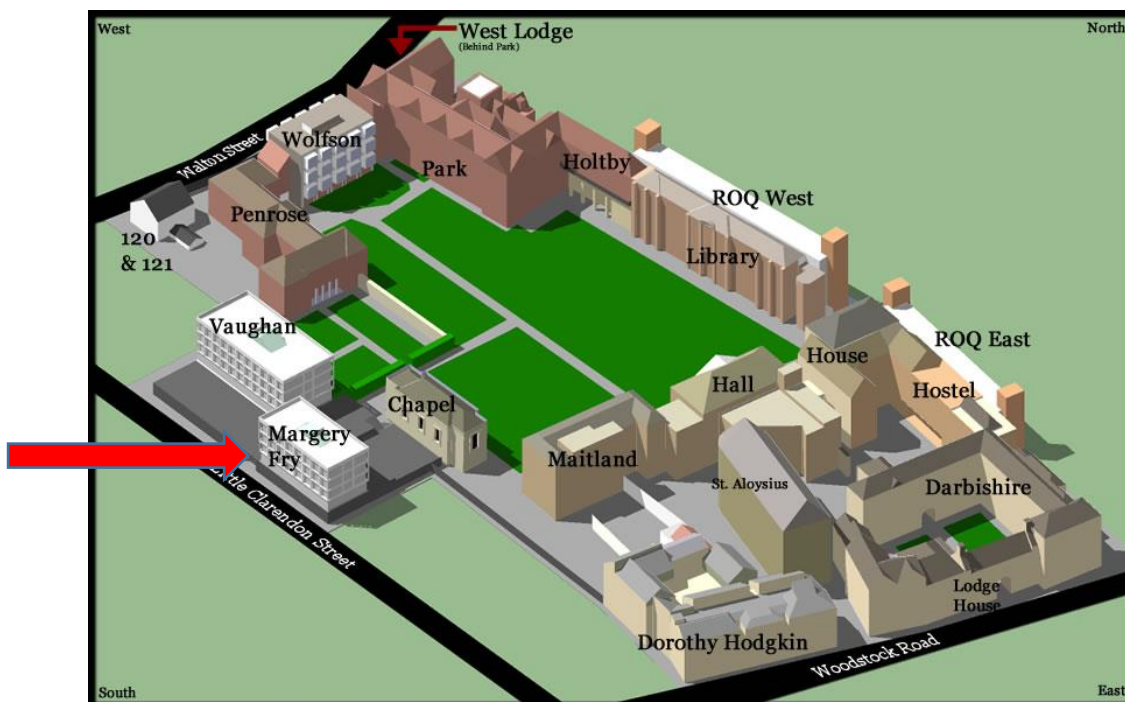
Simply follow the signs, or ask for directions to the building from the Porter’s Lodge (the main College entrance) – you’ll need your access card to enter (which will be given to you when you arrive).

This guide should hopefully provide you with the information you need regarding the facilities at your disposal in Margery Fry, both for those living outside college, and those living in the building itself.



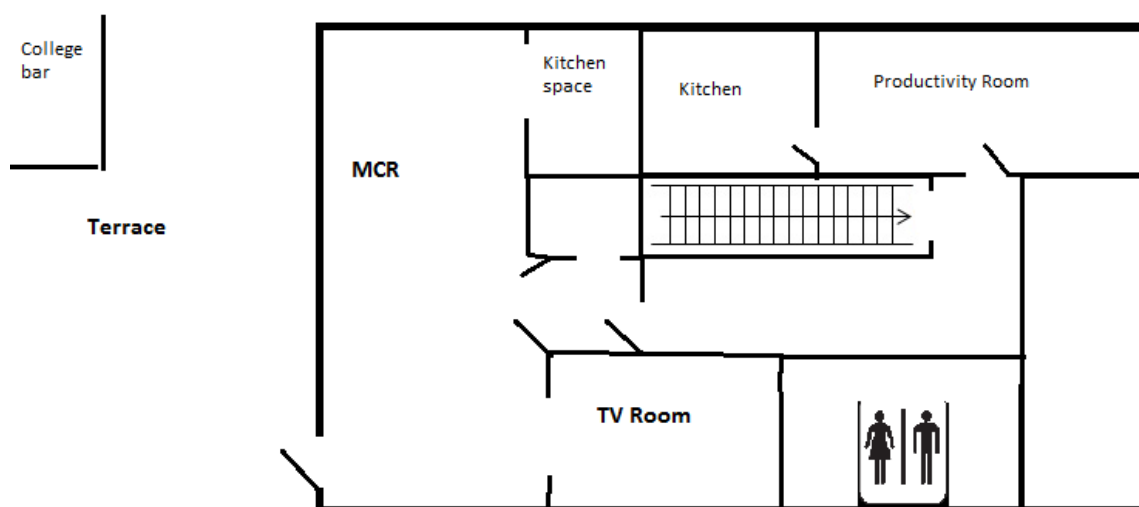
Don’t forget to join the MCR Facebook group (Somerville College MCR) for information on events, and news in College.

If you have any specific questions about Margery Fry, feel free to contact the House Chair, Jean-Michel Johnston ([jean-michel.johnston@some.ox.ac.uk](mailto:jean-michel.johnston@some.ox.ac.uk))



## 1) General Information

### Map of the first floor



---

### MCR (Middle Common Room)

The term MCR refers both to graduate students as a group within College, and to the communal room on the first floor of Margery Fry, where most graduates congregate at some point during the day or evening.

This is essentially your 'living room' where you can relax, chat, eat or watch TV with the other graduates in Somerville. It is also here that a number of regular (or random) organised social events take place: from Welfare Tea, to Wine and Cheese evenings, through Karaoke nights and Movie nights - feel free to come in at any time!

There is a small kitchen space in the MCR with a microwave, fridge, coffee machine and kettle, for anybody to use. Tea, coffee, milk and biscuits are supplied – help yourselves to tea and coffee, which are free (a very small contribution is needed for the biscuits).

In the MCR, you'll also find the TV Room: Movie nights generally take place here every week, but otherwise the room is open for anybody to use. The MCR has a Playstation and a small DVD selection, but films can also be borrowed for free from the College library's collection.

**N.B.** If you are using the MCR or TV Room at night, especially after 11pm, please respect the study and sleep requirements of other students in the building and college, and keep the noise down.

## Productivity Room & Kitchen

The so-called "productivity room" is located at the top of the first flight of stairs into Margery Fry.

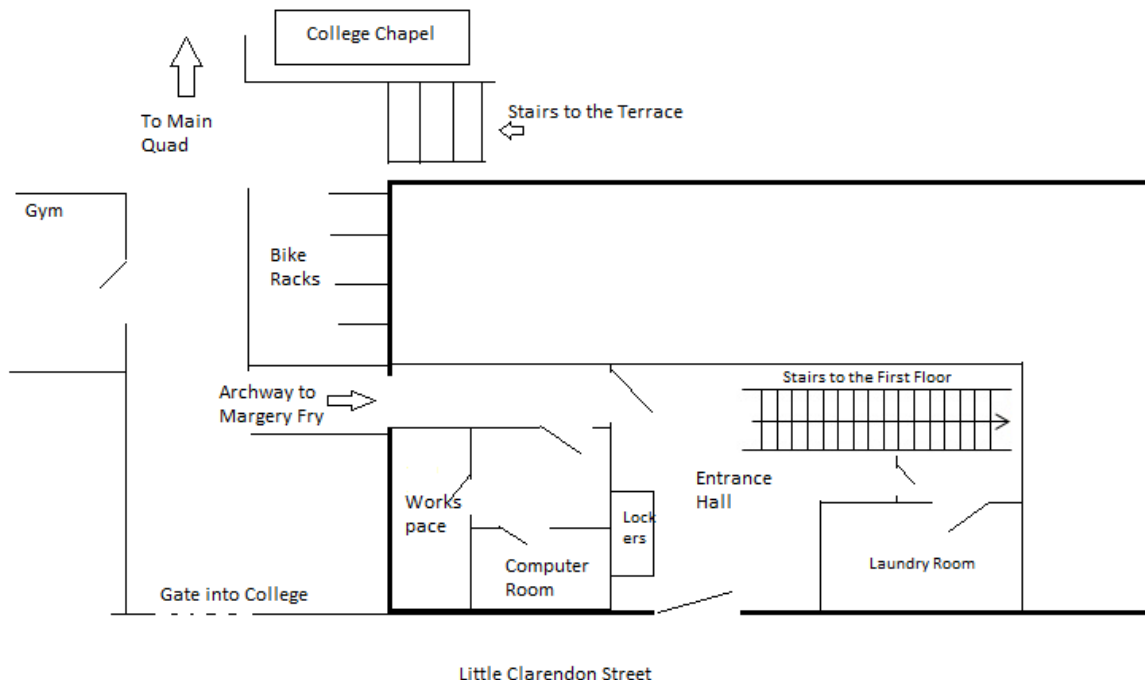
This is primarily a quiet work space, for anybody's use. It can be booked out (using the small whiteboard on the door) for group work sessions or for teaching.

There is also a kitchen adjoining the productivity room, which can be used at most times - if you would like to organise a dinner for friends using the kitchen and dining table in the productivity room, please book the room using the small whiteboard on the door. Make sure you wash and tidy up anything you have used when you leave the room!

**The fridge and freezers in these rooms are some of the very few available in College. The cupboards may be used for storing some food, within reason. Please label any food you leave in the cupboards, fridges and freezers: any food on the verge of taking a turn for the worst will be thrown out!**

N.B. Bookings for teaching take precedence over any other uses of the room.

## Ground Floor Map



### **Computer Room & Work Room**

The graduate computer room can be found on the ground floor of Margery Fry. It has four computers and a printer.

To get there, go through the archway which leads to the entrance at the bottom of Margery Fry (within College), and the door is on your right. You need to use your college access card to get in.

The computer room and the small room next to it can be used for working or teaching.

### **Lockers**

There are a number of small lockers at the bottom of the stairs in the entrance to Margery Fry. These are primarily for the use of those living out of College, and who need some space to keep their belongings. Just send an email asking for a key to the House Chair (jean-michel.johnston@some.ox.ac.uk), and it'll be left in your pigeon hole (i.e. your personal 'post box' in the Porter's Lodge).

### **Laundry Room**

The door to the laundry room can be found at the bottom of the stairs, in the entrance to Margery Fry. There is one washing machine and one tumble dryer, for both of which you will need a laundry card. These can be bought from the machine in the Porter's Lodge, where you can also top-up your card (unfortunately the machine only takes notes).

### **Internet Access**

All the computers in Margery Fry are directly connected to the Somerville network. Wifi (Eduroam, and Somerville's own network) are available throughout the building (and college, for that matter).

#### **Margery Fry House Rules**

- **Fridges, freezers and cupboards are communal, so always assume things must belong to someone else. Label your belongings as far as possible.**
- **Always tidy, clean, and wash up after yourself: the Scouts will not do the washing up – you must.**
- **Mugs, plates and the cutlery in the MCR and Productivity Room, and their adjoining kitchens, belong to the MCR: do not 'appropriate' any of these!**
- **Where recycling bins are provided, please use them.**
- **Keep the noise down at night.**

## II) Information for Margery Fry Residents

### Kitchens

The shared kitchens on each floor of the Margery Fry residence area are communal spaces. Unfortunately, they are also not the biggest of spaces, so please respect other people and keep these clean – The scouts will not do any washing up, students must do their own, regularly, and clear up after using the kitchen.

Two cupboards and two drawers in each kitchen have been marked as ‘communal’. Plates, cups, mugs, cutlery, pots/pans, and cooking utensils have been provided by the MCR for everybody’s use. **Return these to the kitchen once you have finished with them, clean them, and replace them in the cupboards.**

Everybody is entitled to roughly one shelf’s worth of space in one of the two fridges in each kitchen. Any food in the fridges is private property. Please throw away anything which is likely to go off.

You will find room numbers on the kitchen cupboards – use whichever one corresponds to your bedroom: as space is limited, some of the larger cupboards have to be split between two rooms. If you do not have enough space, feel free to negotiate with the other people on your floor. **Do not unilaterally take over someone else’s fridge or cupboard space.**

**Don't cook past midnight.** If it’s absolutely essential, please use the productivity room kitchen.

**Please Recycle:** Cardboard and recyclable plastics (it usually specifies this on the packaging) can be separated from normal rubbish. Glass shouldn’t be left in the normal bin – please take any empty glass containers down to the recycling bins at the bottom of Margery Fry.

### Bathrooms & toilets:

Again, these are shared: not much to say here that isn’t obvious: please keep these clean.

### Noise

One of the joys of (graduate) student life is having the possibility to work pretty much where and when we feel like it. However, most people still adhere to the standard binary configuration of night & day – so respect your neighbours and keep the noise down at night, whatever might be keeping you up...

### Problems

If you notice anything wrong, or unusual in your bedroom, kitchen or bathroom, send a message to the College Maintenance department, who can (hopefully) help fix the problem: [http://www.some.ox.ac.uk/954/all/1/Maintenance\\_Request\\_Form.aspx](http://www.some.ox.ac.uk/954/all/1/Maintenance_Request_Form.aspx)